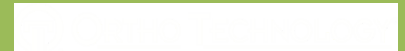




EZ SPACE MAINTAINER®

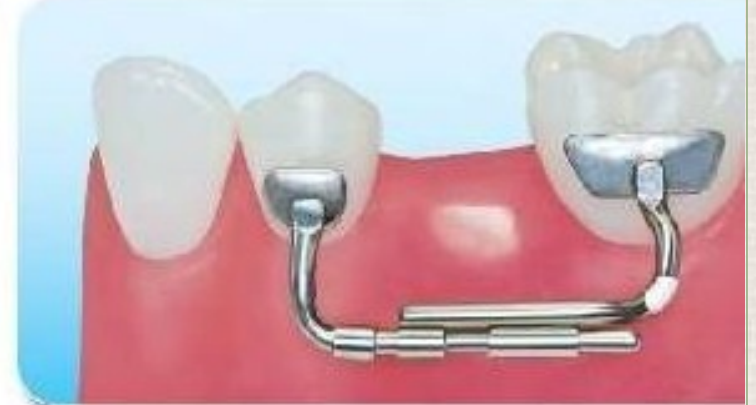
Adjustable, Bondable Space Maintainer



EZ Space Maintainer®



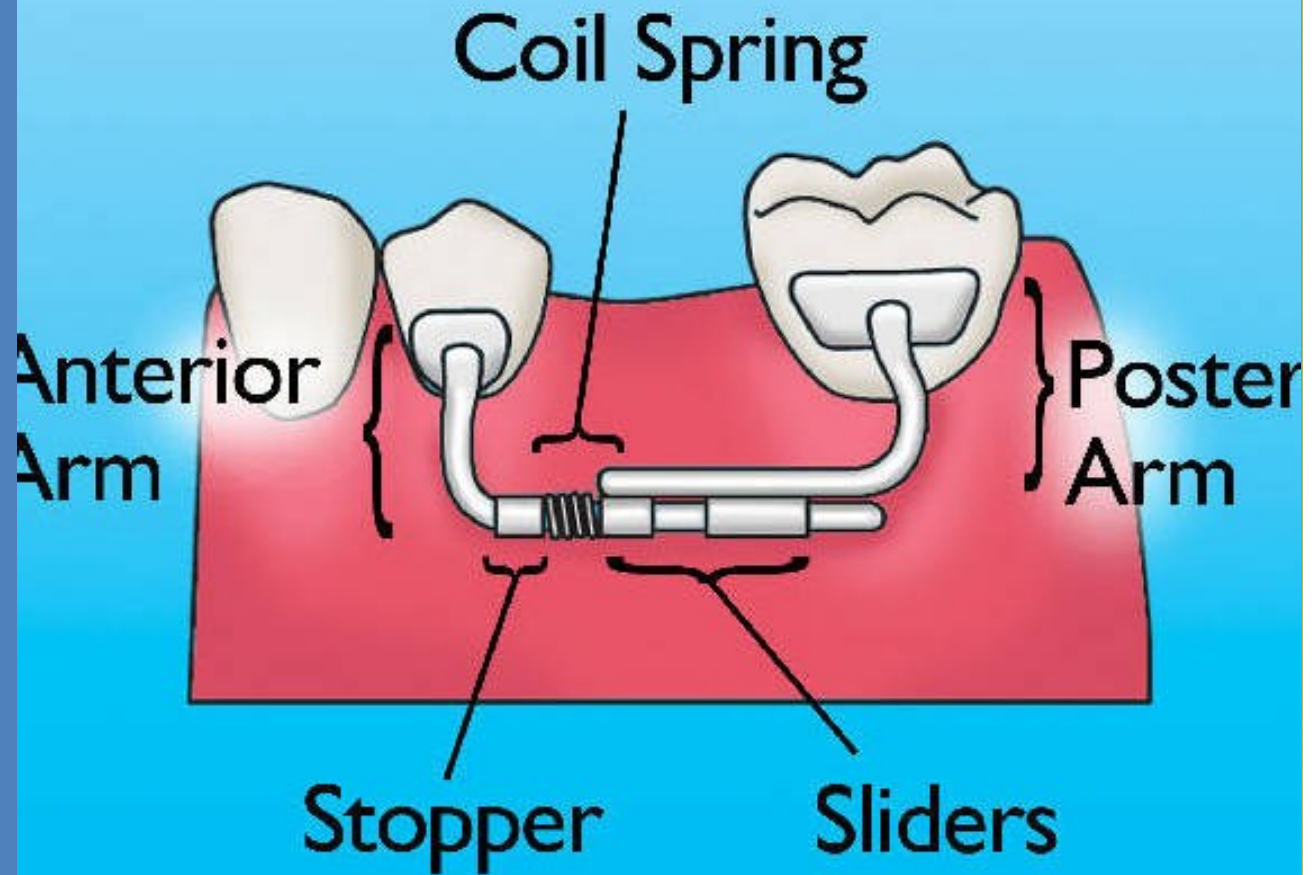
Exclusively from Ortho Technology



Adjustable, Bondable Space Maintainer



Part Reference Diagram



EZ Space Maintainer®

EZ reference color marks for easy quadrant identification located on the posterior arm of the EZ Space Maintainer

**GREEN –
Upper Right**

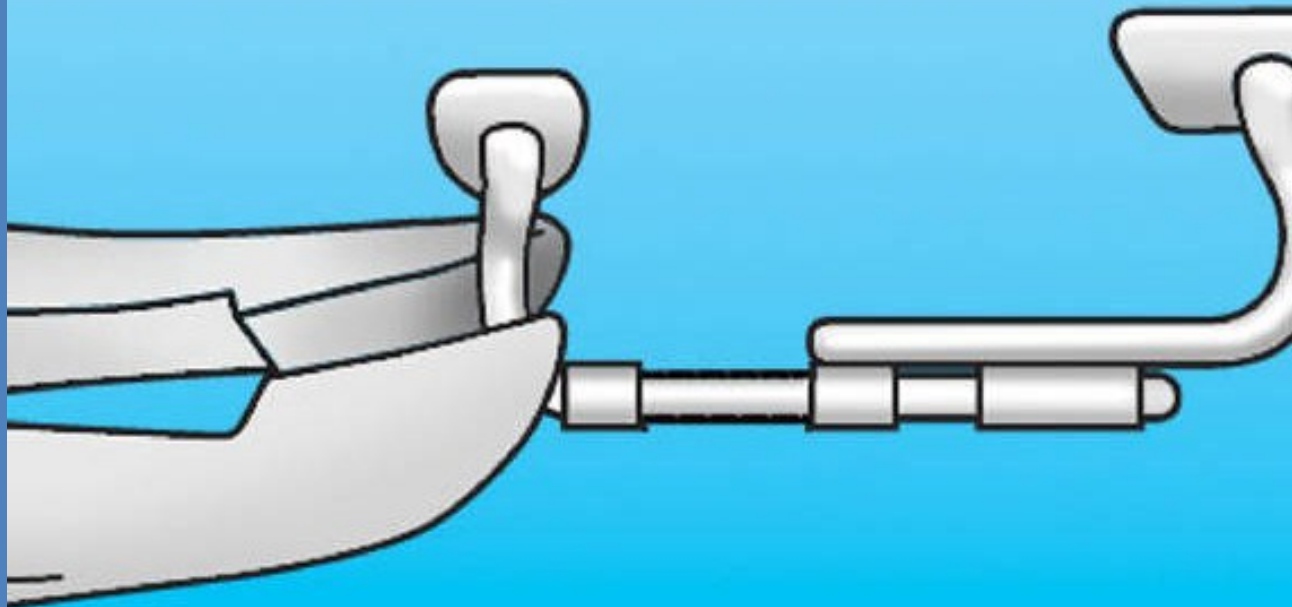
**YELLOW –
Upper Left**

**RED –
Lower Right**

**WHITE –
Lower Left**

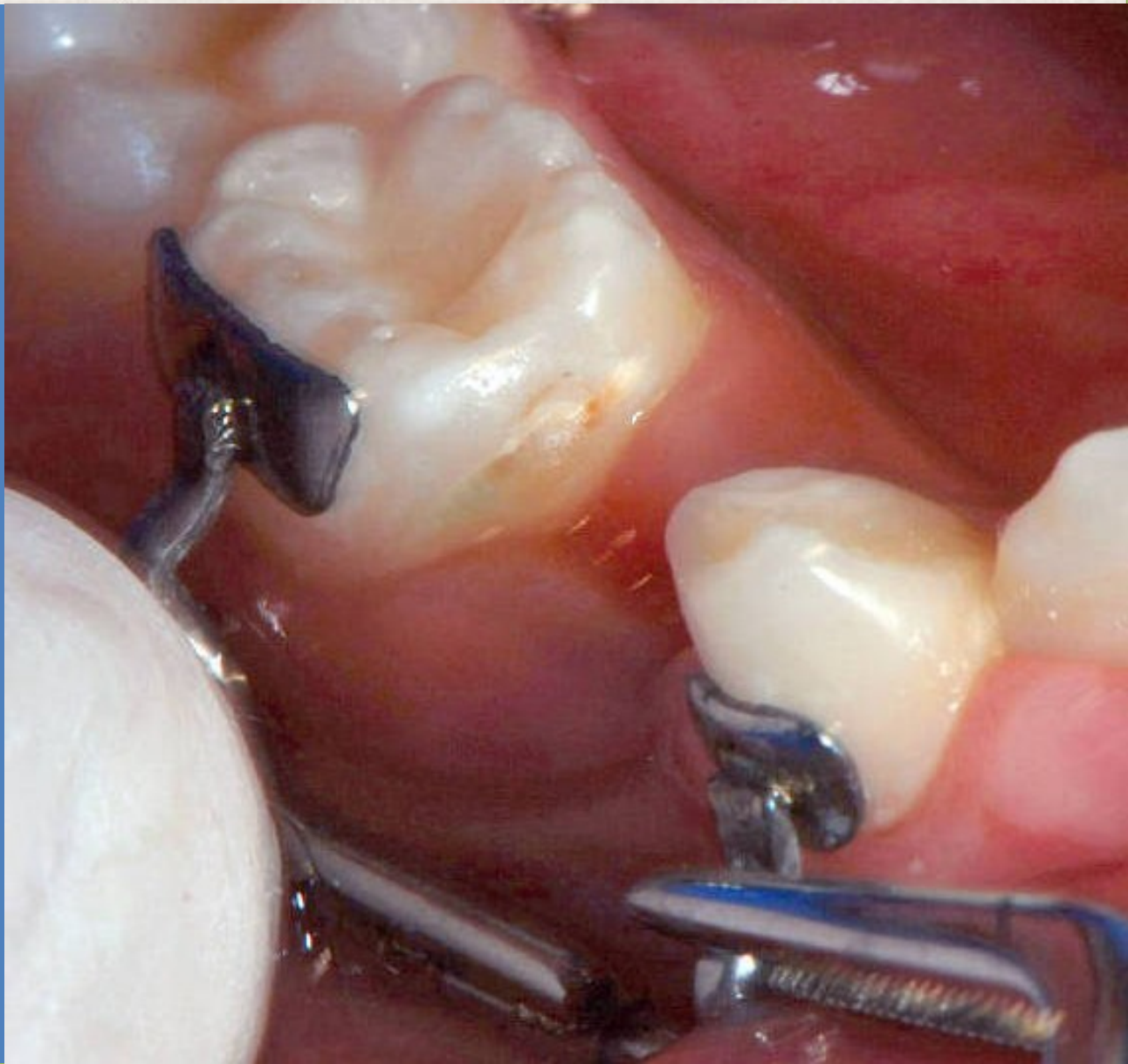


Space Maintaining

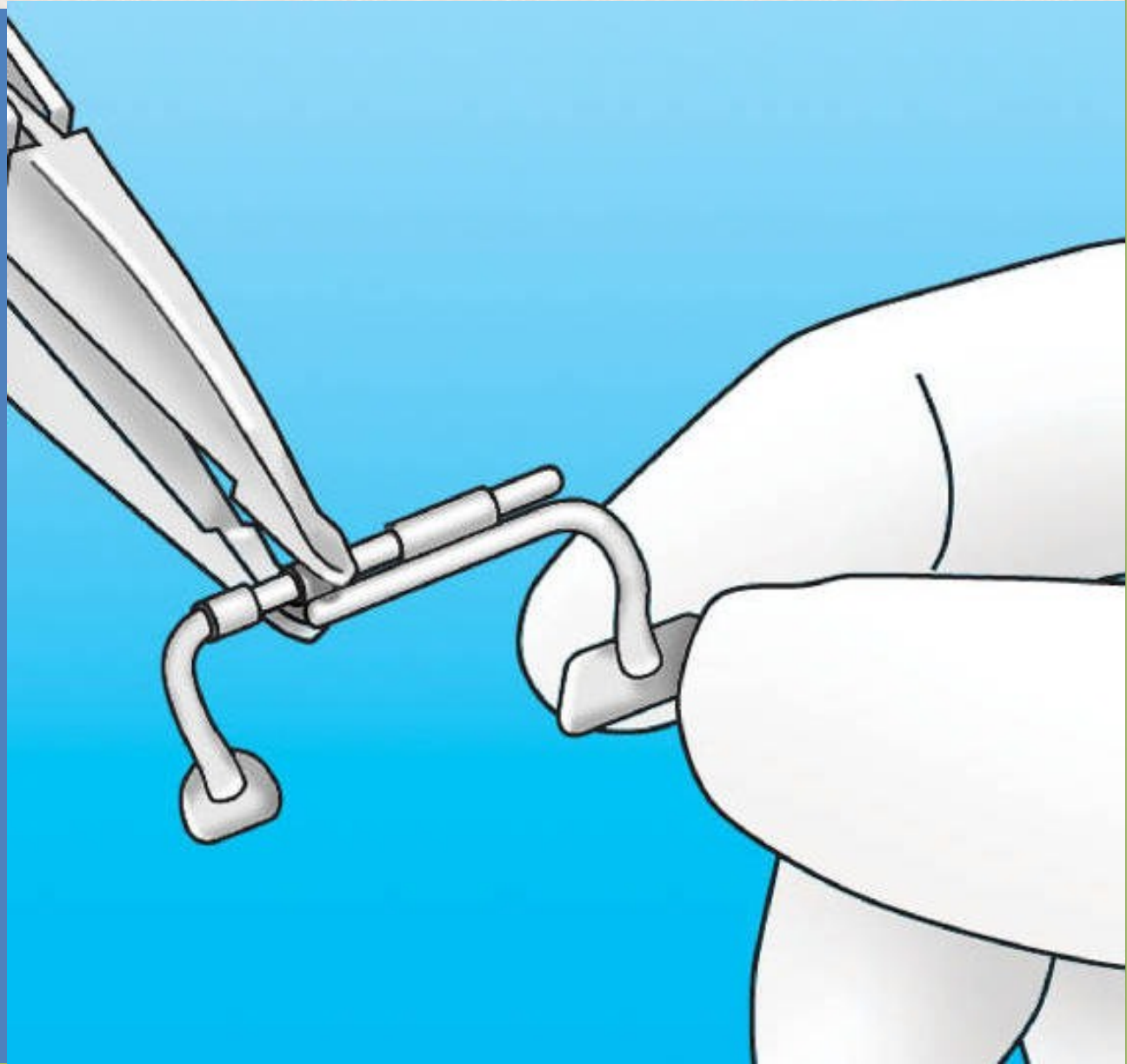




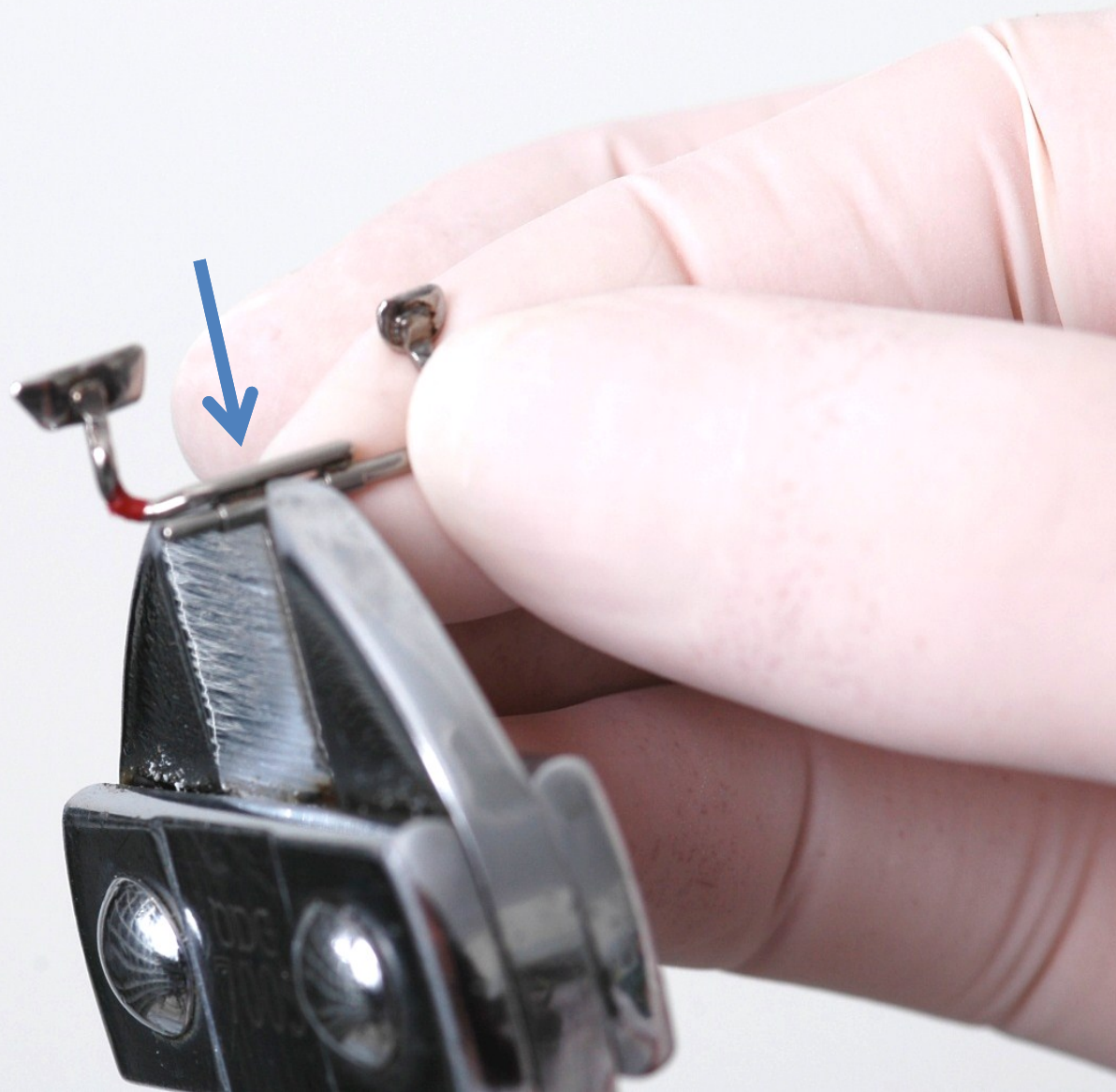
Space Maintaining



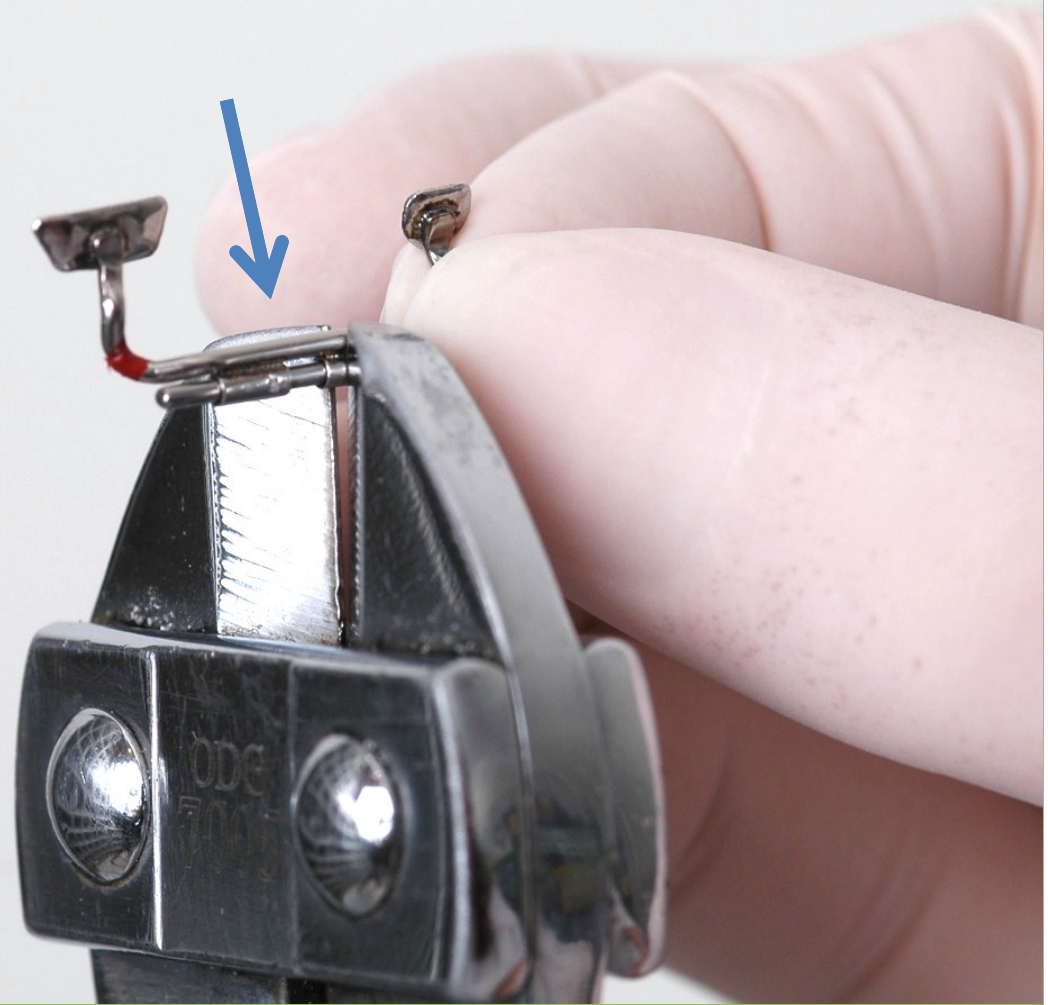
Space Maintaining



Space Maintaining



Space Maintaining

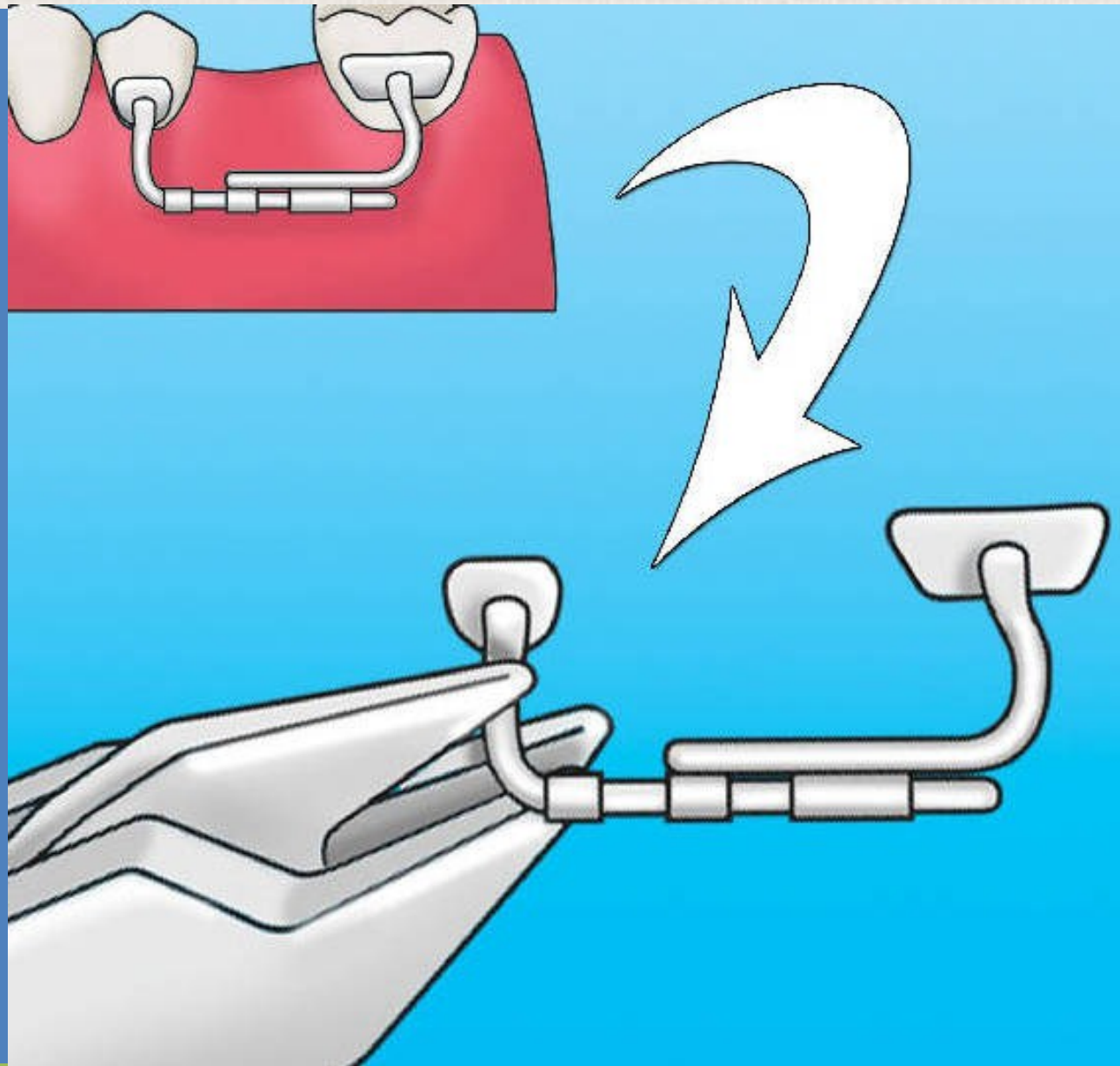




Space Maintaining



Space Maintaining





Space Maintaining

If necessary...



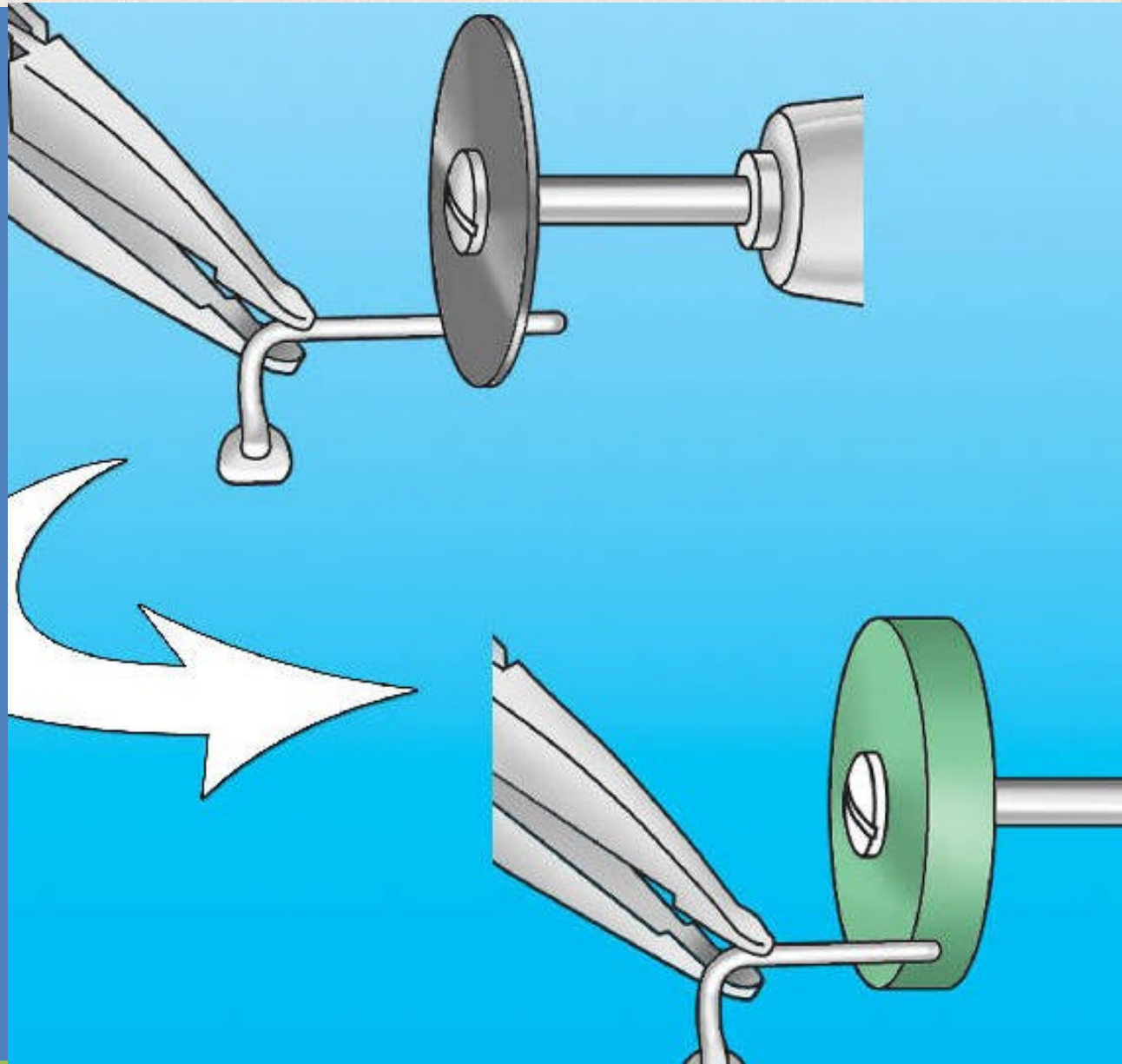


Space Maintaining

If necessary...



Space Maintaining





Space Maintaining





Space Maintaining





Space Maintaining





Space Maintaining (after 5 months of usage)





Space
Maintaining
(after 5 months
of usage)





Space Maintaining





Space Maintaining



Exclusively from Ortho Technology

EZ Space Maintainer

Space Maintaining



Courtesy of Dr. Serkan Güleç

Space Maintaining



Courtesy of Dr. Serkan Güleç



Space Maintaining



Courtesy of Dr. Serkan Güleç



Space Maintaining



Courtesy of Dr. Serkan Güleç

June 2008

February 2009

Space Maintaining



Courtesy of Dr. Serkan Güleç



Space Maintaining



Courtesy of Dr. Serkan Güleç

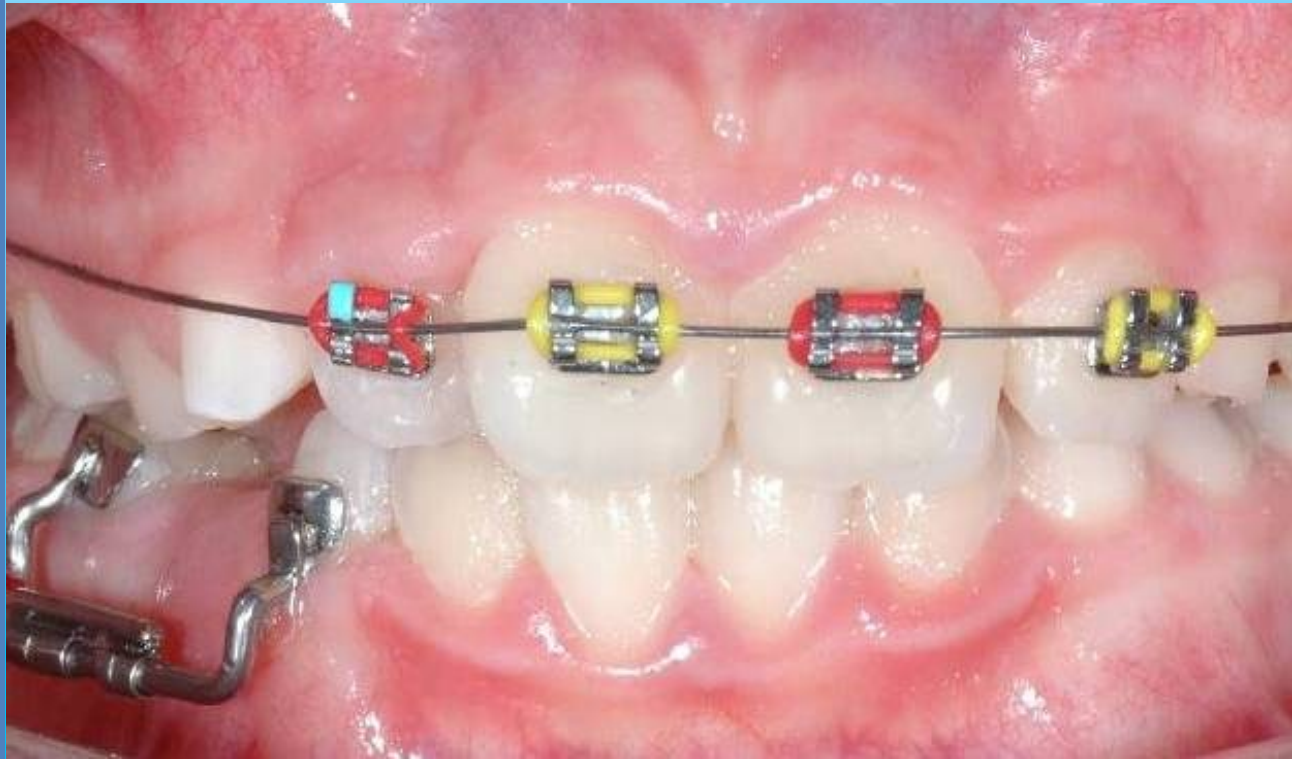


Space Maintaining



Courtesy of Dr. Serkan Güleç

Space Maintaining



EZ Space Maintainer®

Key Features

- **Simple and easy to use**
- **Direct bond appliance**
- **Less chair time**
- **Less expense**
- **No lab fees**
- **More hygienic**
- **More aesthetic**
- **Fixed and adjustable**



“Clinical Success of a New Fixed Space Maintainer”

Serkan Güleç DDS

International Journal of Pediatric Dentistry

Abstracts of the 22nd Congress of
the International Association of
Pediatric Dentistry

Munich, Germany, 17-20 June 2009

Volume 19 – Suppl. 1

June 2009



Objective



- The aim of this study is to evaluate the clinical success of a newly designed fixed space maintainer
- The gingival index (GI) and plaque index (PI) were recorded at baseline



Material and Methods

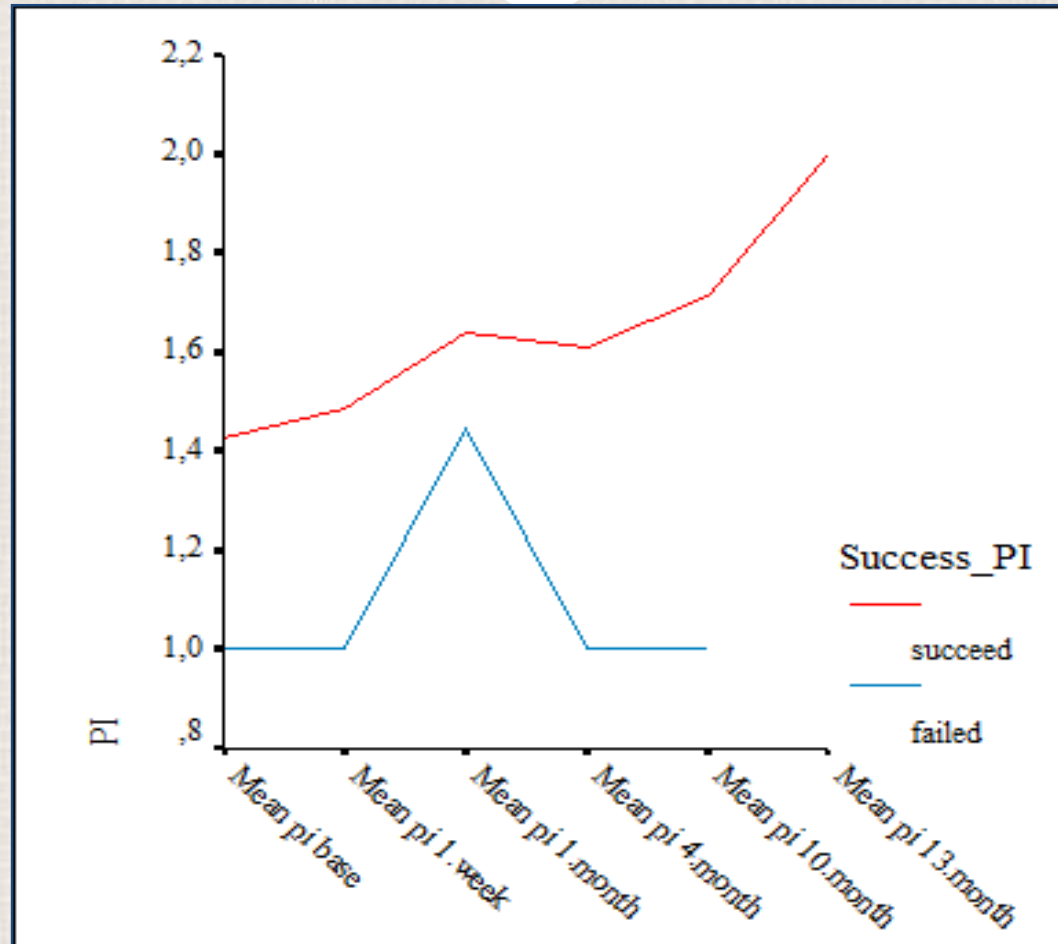


- 31 healthy children aged between 6-12 (mean $8,7 \pm 2,4$) participated in the present study
- The possible effects of the maintainers on the oral hygiene were assessed by comparing the baseline index scores with the first week, first month and the third month index scores
- The success rate of the new fixed space maintainers was also evaluated, at the same time intervals, by survival analyses and compared with long rank tests

Results

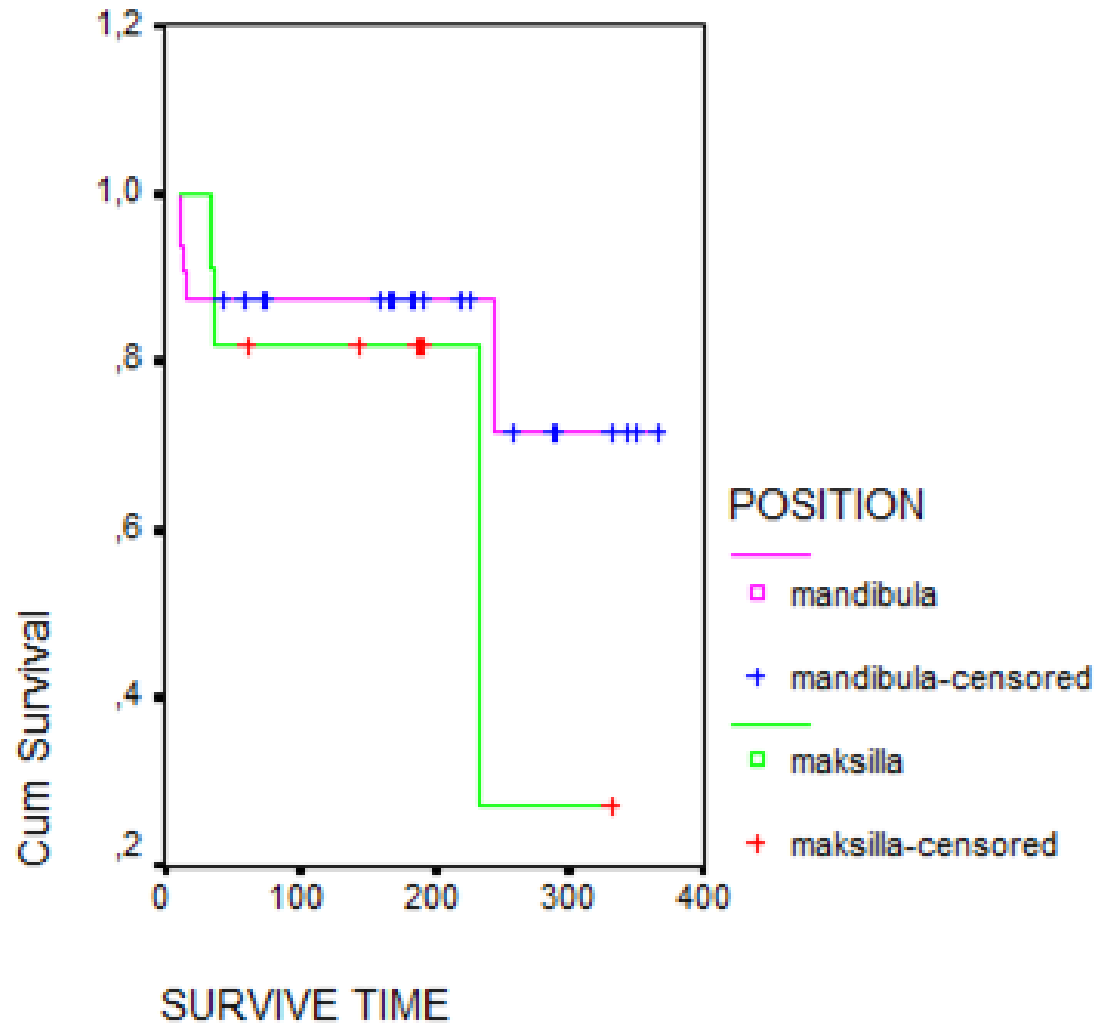


N=43



PI-Success – Survive Time

Results



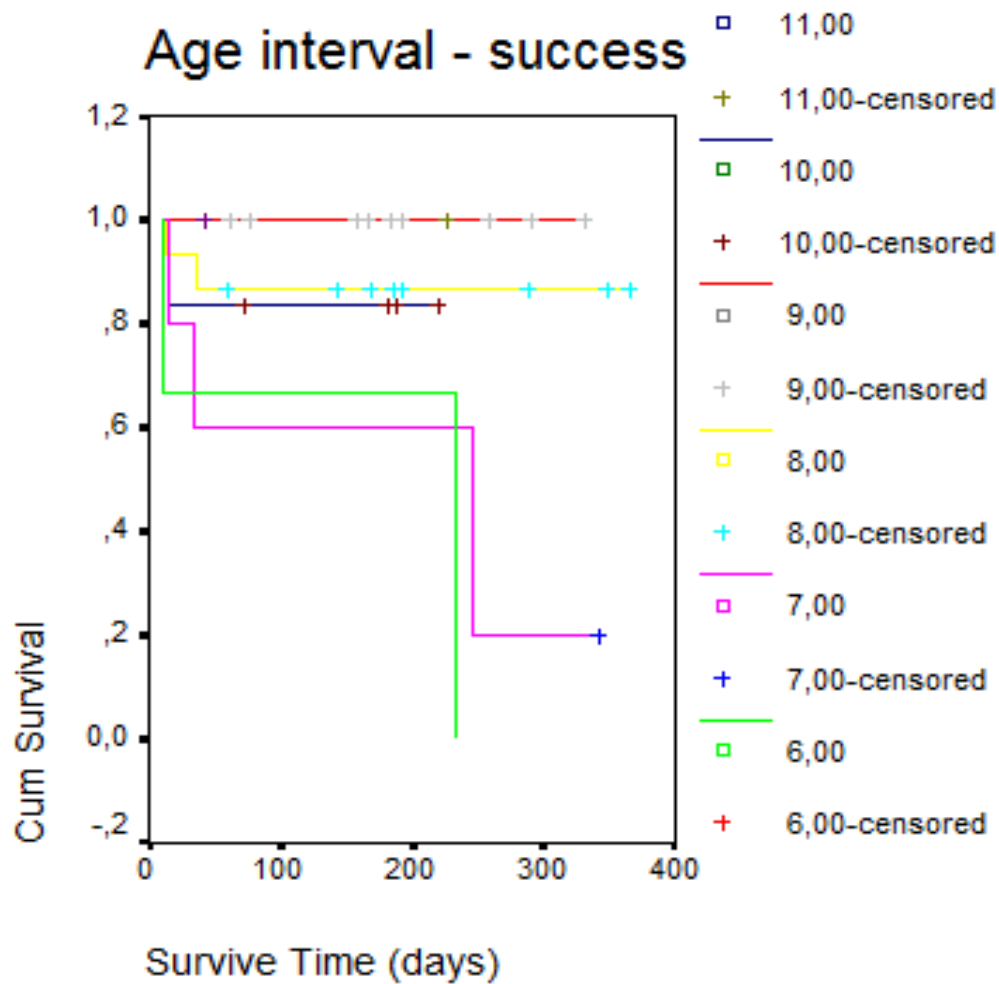
Success – Survive Time

Maxiller n=11

Mandibular n=32

P=0,158

Results

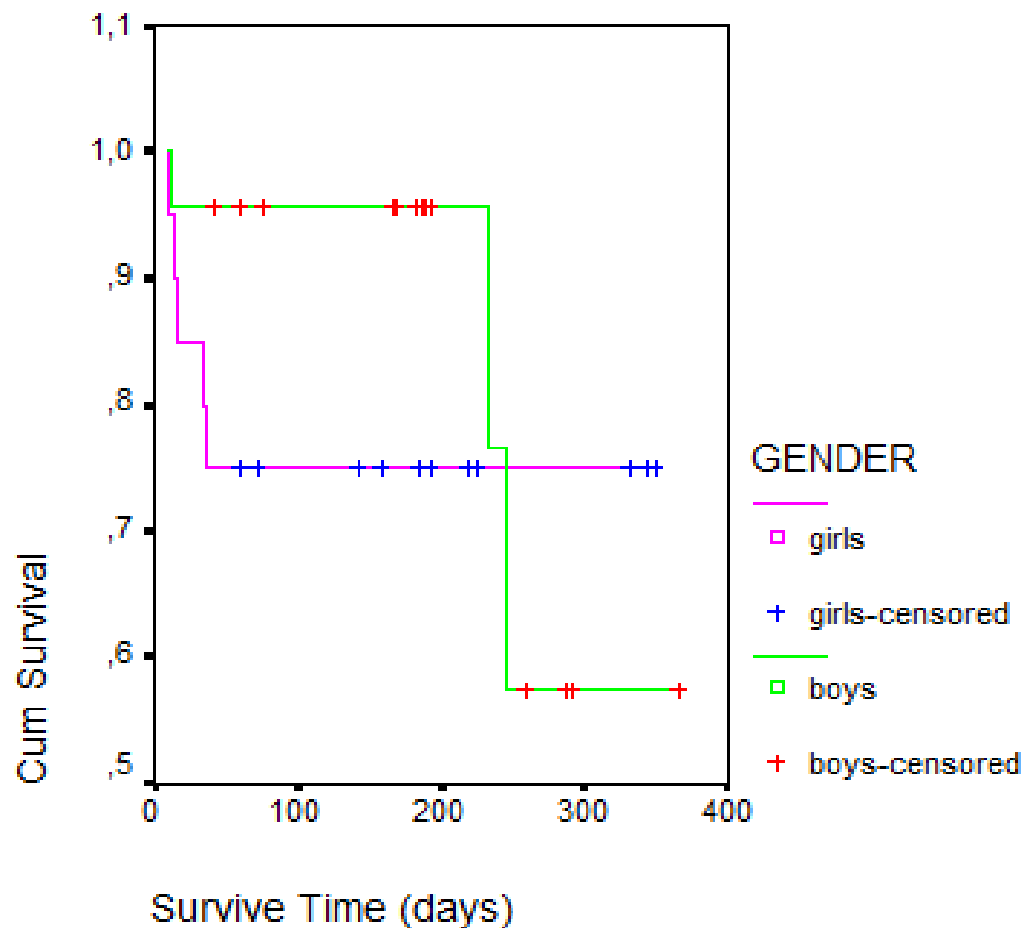


P=0,005

Results



Survive time - Gender



P=0,47

Conclusion



- This space maintainer (EZ Space Maintainer) could be a good alternative to other fixed appliances
- It can be time saving
- Ease of application
- The considerably long survival time

EZ Space Maintainer®

Key Features

- **Simple and easy to use**
- **Direct bond appliance**
- **Less chair time**
- **Less expense**
- **No lab fees**
- **More hygienic**
- **More aesthetic**
- **Fixed and adjustable**



EZ Space Maintainer®



Exclusively from Ortho Technology



Adjustable, Bondable Space Maintainer



Space Regaining



To regain space, simply activate the coil by squeezing the stopper with any plier

Space Regaining

**GREEN –
Upper Right**

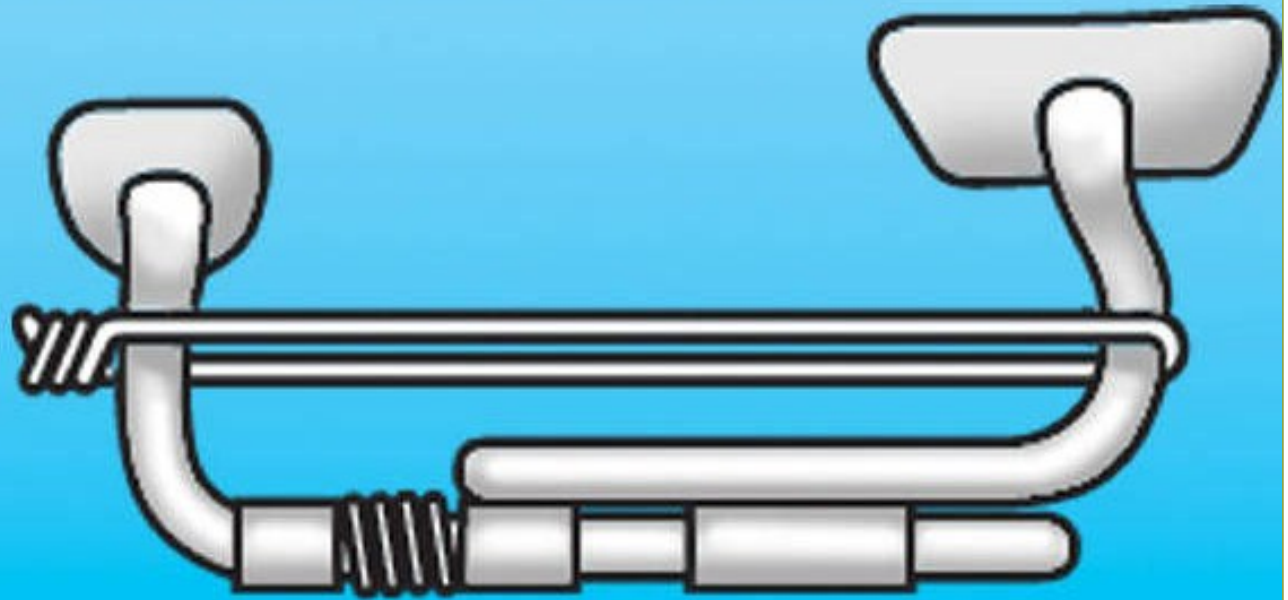
**YELLOW –
Upper Left**



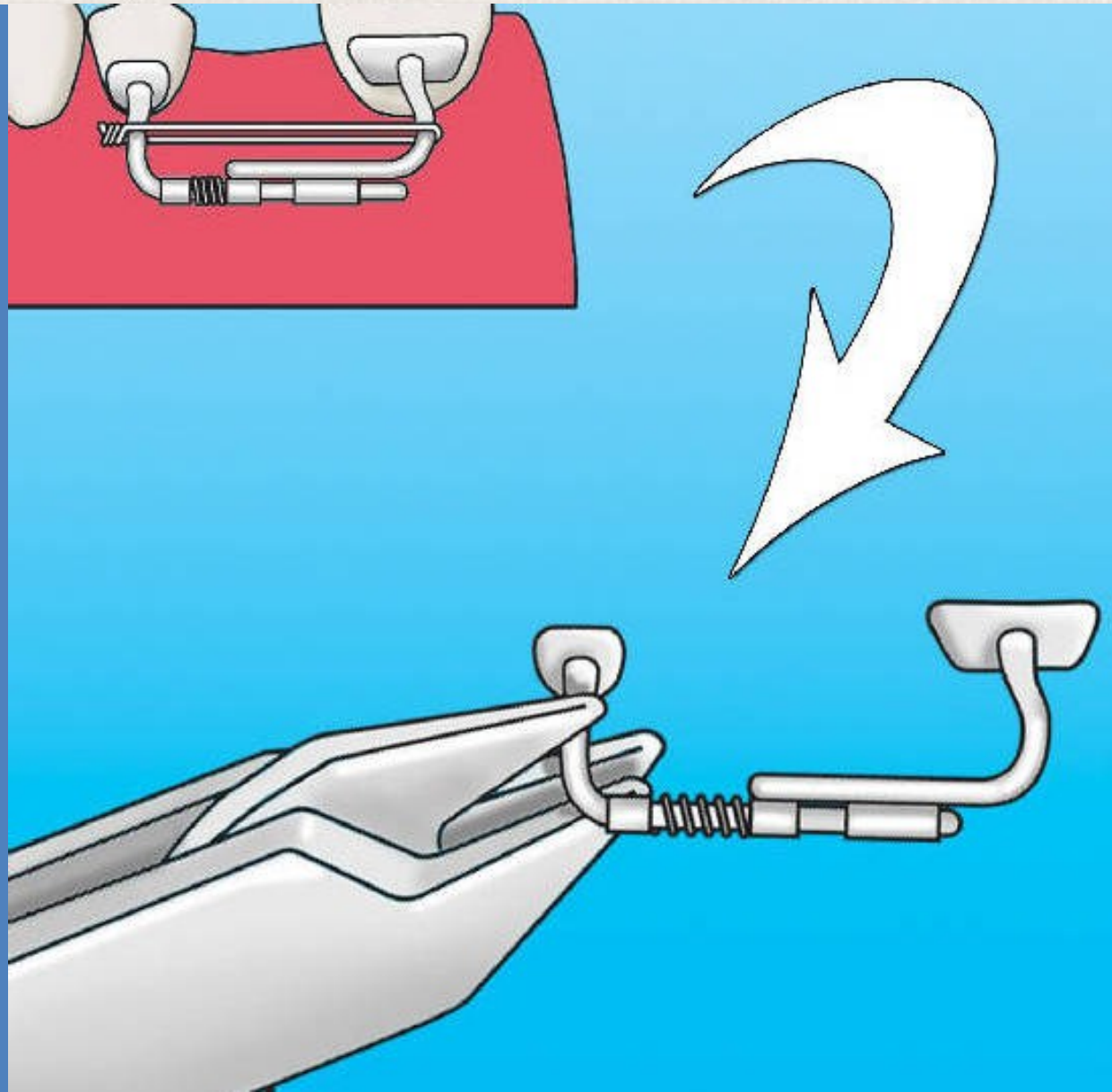
**RED –
Lower Right**

**WHITE –
Lower Left**

Space
Regaining

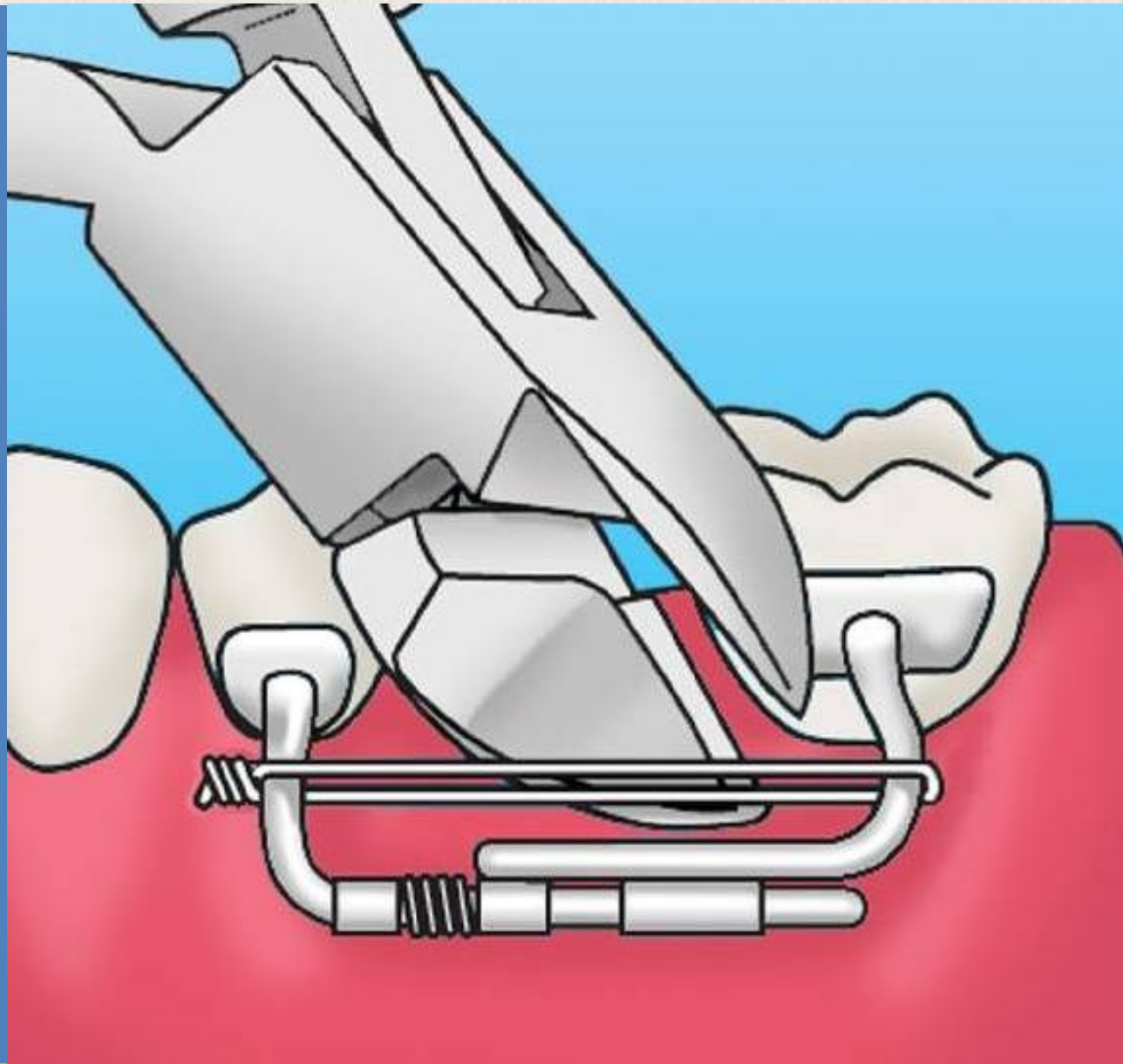


Space Regaining

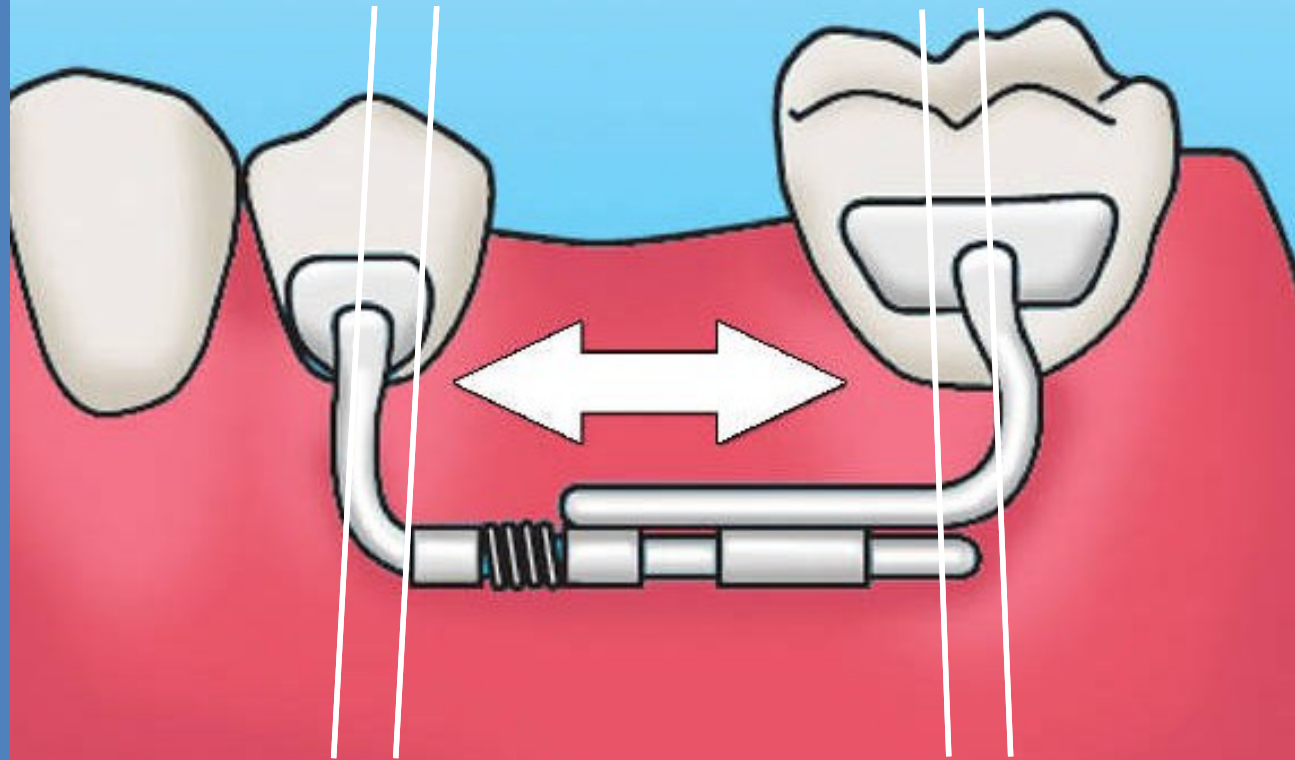




Space Regaining



Space Regaining



The coil will push them apart without any
uprighting

QUESTIONS?

enisguray@mail.com